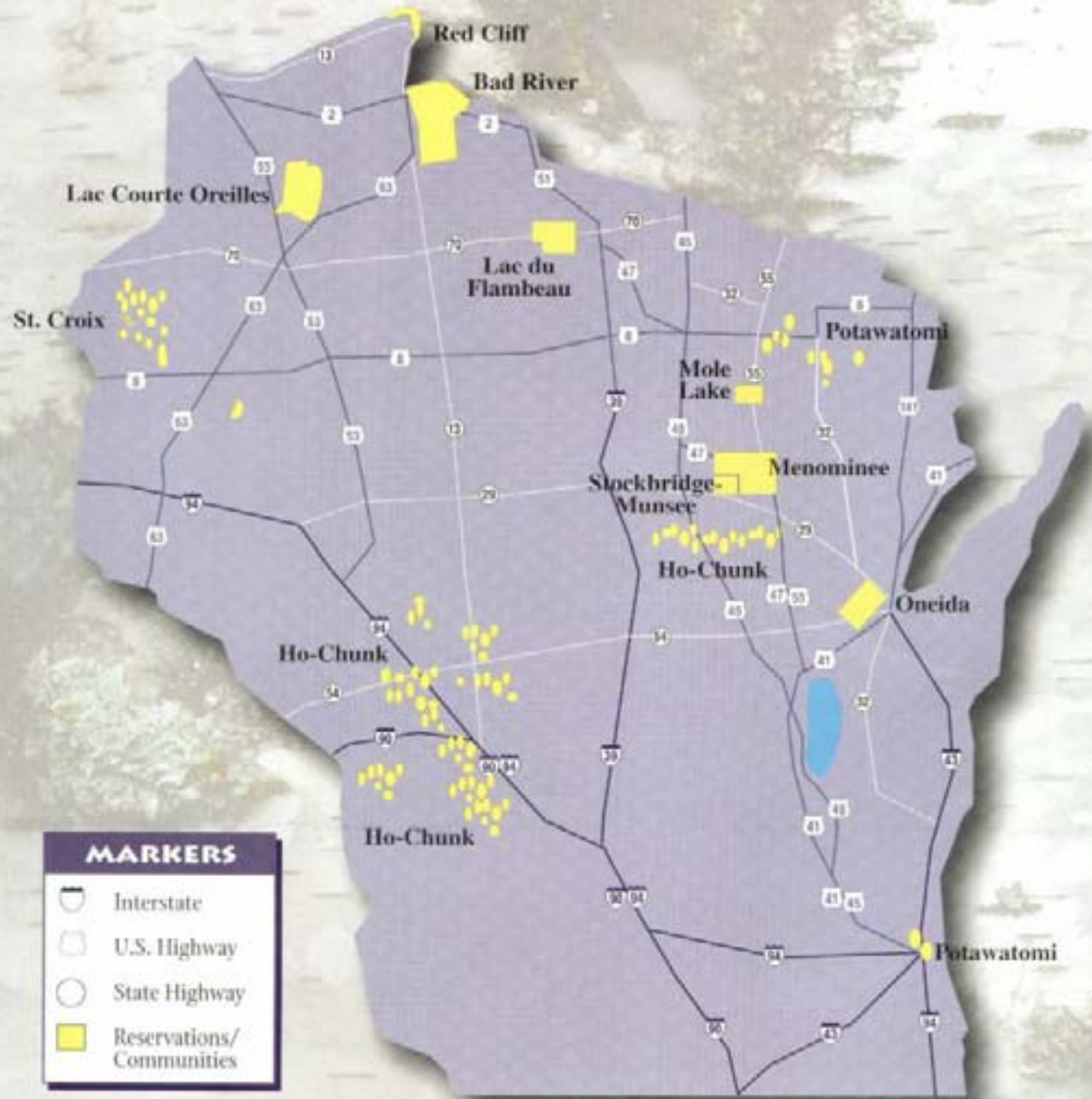


2006 National Environmental Summit

**What's Happening in the Arena of
Tribal Pollution Prevention:
Bad River Band of Lake Superior
Tribe of Chippewa Indians –
Looking Forward Seven
Generations**

Tom Wojciechowski



Environmental Policy Statement

- ▶ Looking forward Seven Generations, the Bad River Band of Lake Superior Tribe of Chippewa Indians is committed to ensuring a clean and healthy environment within the Reservation.
- ▶ Adopted August 9, 2000
- ▶ The policy identifies 8 guiding principles that support the vision statement.

Four Examples

- ▶ Energy and Renewable Energy Taskforce
- ▶ Three Essential Community Facilities project
- ▶ Burn Barrel reduction project
- ▶ Gitiganing Garden project

Energy Task Force

- ▶ The Task force was formed by Tribal Council resolution to: “research tribal energy needs, renewable energy sources and to develop a comprehensive Tribal Energy Plan that will empower and enable the community to move toward energy independence.”

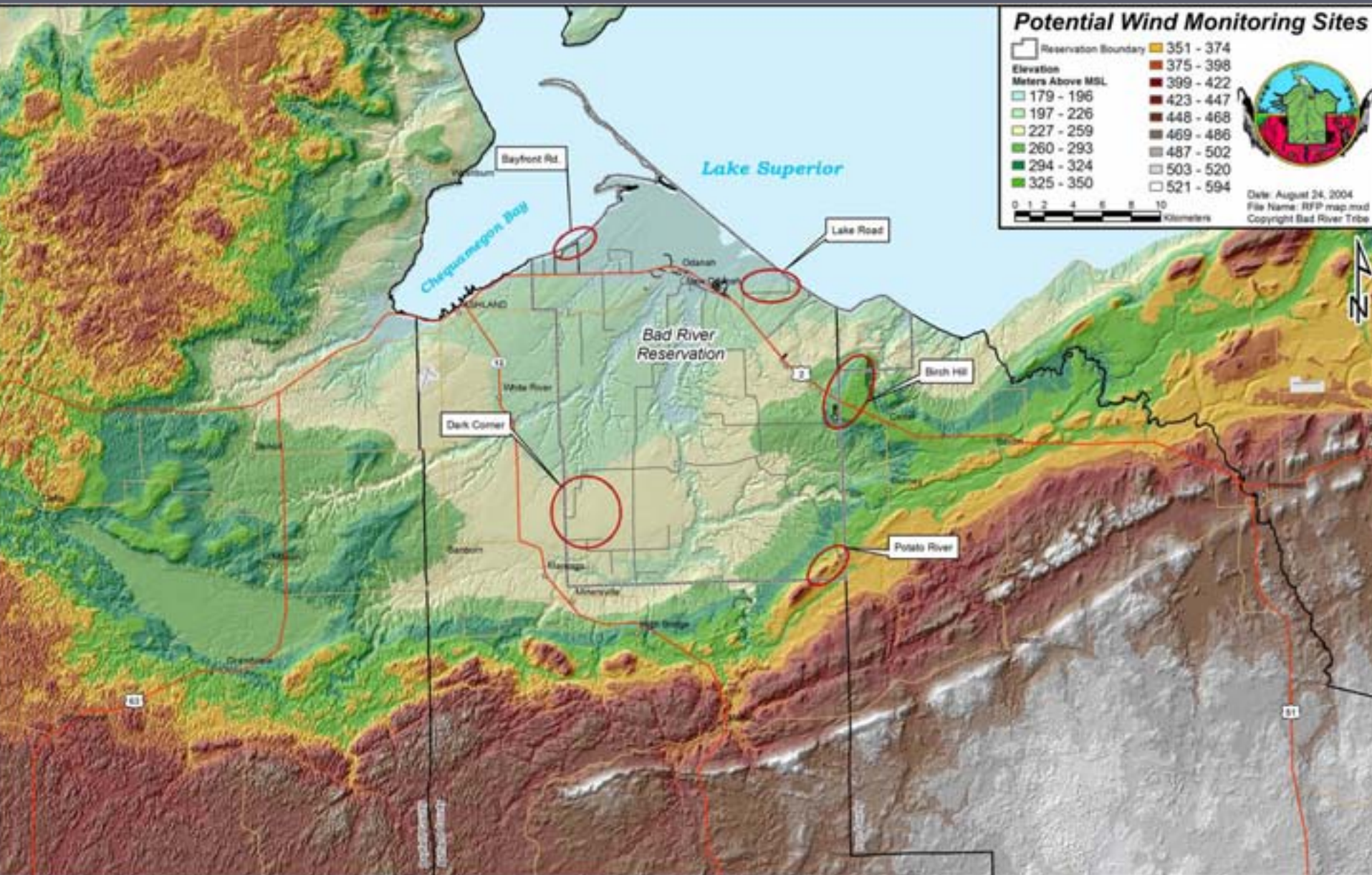


Wind Monitoring Project

Site selection

We faced a significant challenge in finding open areas





Potential Wind Monitoring Sites

	Reservation Boundary	351 - 374
	Elevation Meters Above MSL	375 - 398
		399 - 422
		423 - 447
		448 - 468
		469 - 486
		487 - 502
		503 - 520
		521 - 594



0 1 2 4 6 8 10 Kilometers
 Date: August 24, 2004
 File Name: RFP map.mxd
 Copyright Bad River Tribe



Wind monitoring towers collect data at heights similar to a wind generator



Each monitoring tower holds:

- * four anemometers**
- * two wind vanes**
- * one temperature sensor**

All the data is recorded by the data logger at the base of the tower.

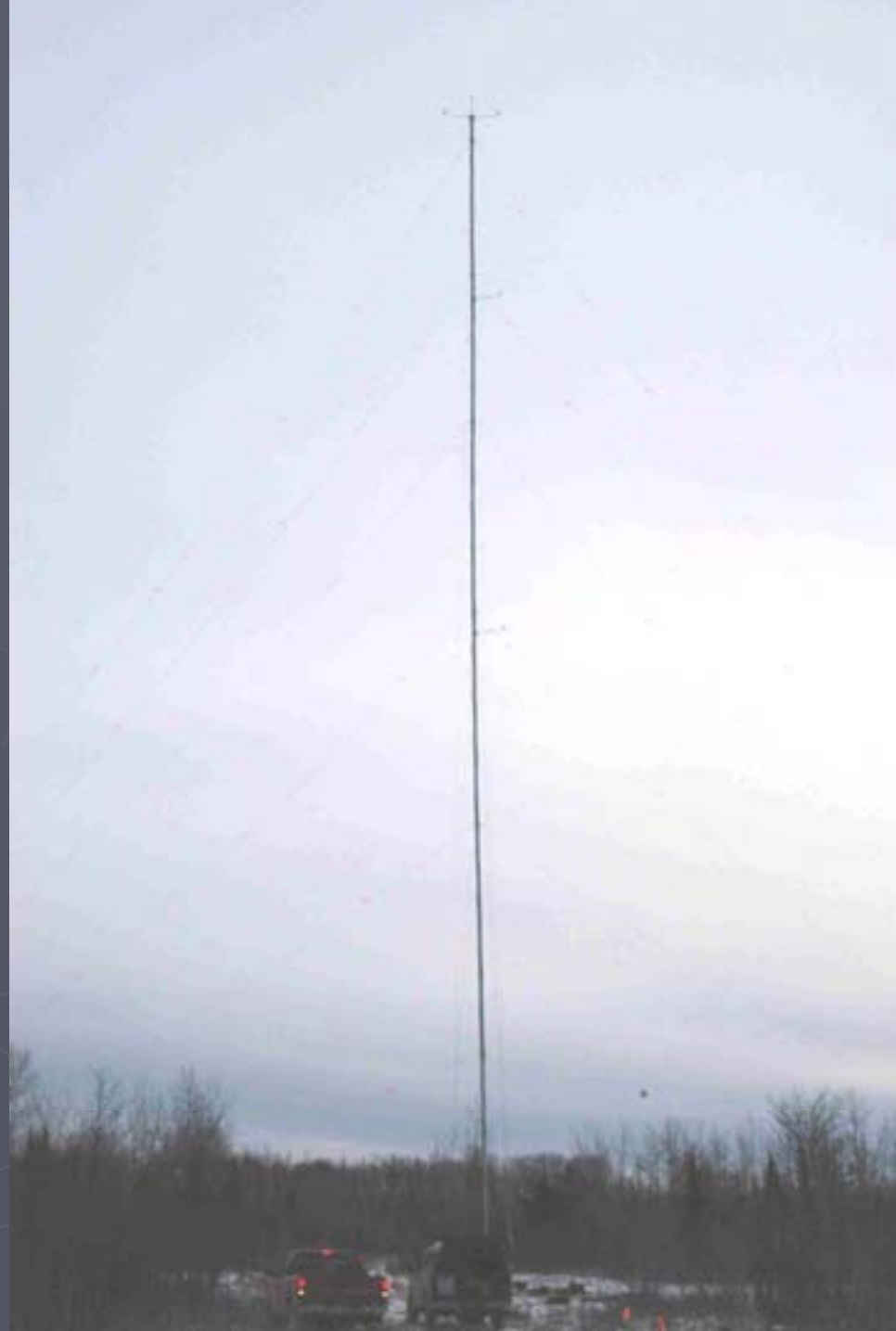


Each tower is assembled on the ground and then raised with a winch and a gin pole.



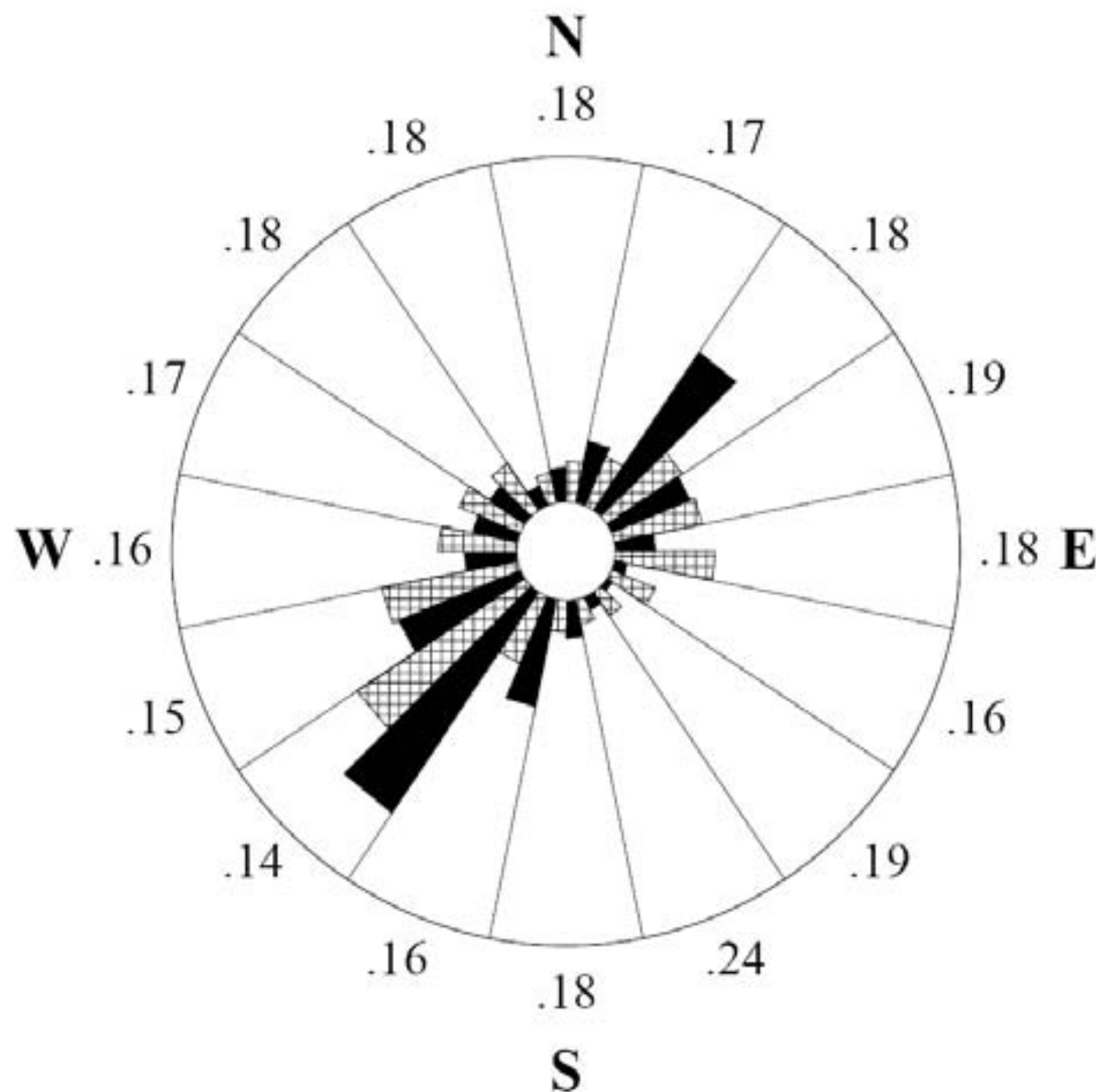
**Each tower is
50 meters tall
with sensors
at 50 m., 40
m., and 25 m.**

**This is a picture
of the lake road
tower**



1/4/2005 to 4/30/2005

Wind Rose Ch 1, 7



Site Information:

Project:

Location:

Elevation:

Anemometer on channel 1:

50m #40 Anem. mph

Height: 164 ft

Serial #: SN:19804

Vane on channel 7:

#200P Wind Vane

Height: 164 ft

Serial #: SN:

Outer Numbers are Average TIS for speeds greater than 10 mph

Inner Circle = 0%

Outer Circle = 30%

■ Percent of Total Wind Energy

▣ Percent of Total Time

Site Information:

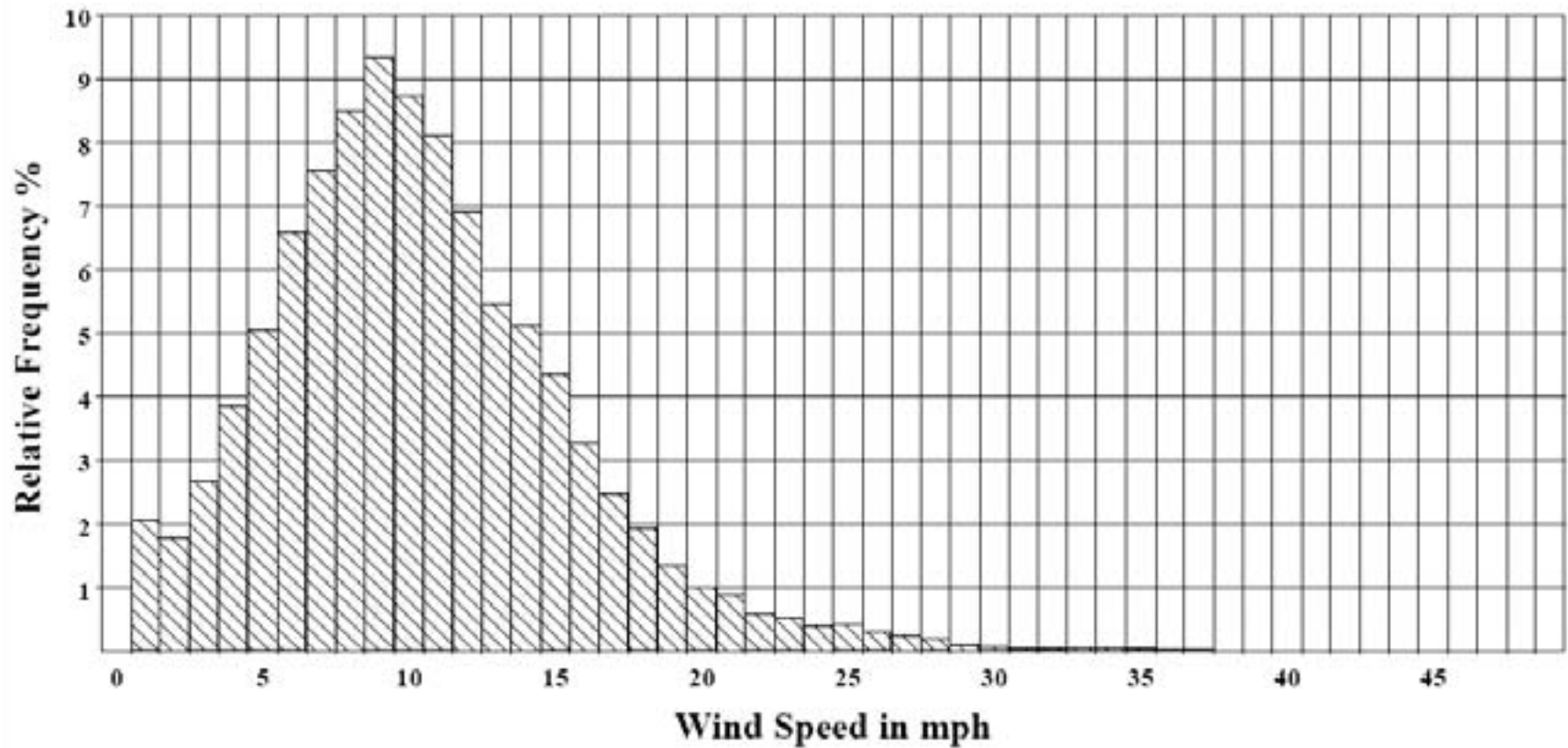
Project:
Location:
Elevation:

Sensor on channel 1:

50m #40 Anem. mph
Height: 164 ft
Serial #: SN:19804

1/4/2005 to 4/30/2005

Frequency Distribution



Benefits of Locally Owned Renewable Energy Projects

- Provides new “Cash Crop” for Tribes and/or other Land Owners not tied to Traditional Natural Resources or Crops
- Keeps Energy Dollars in the Community
- Stimulates Economic Development in Rural Areas
- Creates Additional Jobs for Local Contractors and Tribal Members
- Provides Long Term, Low Cost, Clean, Sustainable Energy

New Task Force Initiatives

- ▶ A comprehensive energy load assessment of the entire reservation
- ▶ A biomass assessment of tribal lands with energy in mind.
- ▶ Energy efficiency projects that will be based on data gathered in the load assessment
- ▶ Researching other renewable energy opportunities

Three Essential Community Facilities

- ▶ This project includes:
 - An Elderly Community Center
 - 32-Unit Elderly Apartment building
 - An Early Childhood Education Center

Project Themes

- ▶ The importance of the tribes history as a woodland people and their sense of place
- ▶ Embracing and building appropriately for our northern climate
- ▶ The sacredness of water and the need to protect the wetlands woven through the site
- ▶ Circular shapes in facilities and site development that blend with the natural surroundings
- ▶ Integration of the buildings with the natural contours and features of the site
- ▶ Recognition of cultural wisdom and preparation of means to pass that wisdom on to future generations
- ▶ Creation of the sense of belonging
- ▶ Designs that welcome the outdoors in

Three Facilities Plan



Site Plan



Green Building

- ▶ We are applying for US Green Building Council – Leadership in Energy and Environmental Design (LEED) certification. Our planning team set a LEED goal to achieve a Gold ranking. Following the LEED guidelines we are evaluating the buildings' environmental impacts in the following 5 categories:
 - Energy Efficiency
 - Indoor Environmental Quality
 - Sustainable Sites
 - Water Efficiency
 - Materials & Resources

Efforts to Reduce Burn Barrels On The Bad River Reservation: “Working Towards a Burn Free Community”



Participants Received Free Pick Up Of Their Burn Barrel



**Participants Also Received Disposal Of The Contents
Of Their Burn Barrel**



Participant Signing “Burn Free Home” Pledge While Air Quality Specialist Holds Incentive Bag With Promotional Items



Forty Four Burn Barrels Were Collected During The Buy-Back Program, Resulting In A 25% Reduction Of The Total Barrels On Reservation.



**Burn Barrel Collected From A Residence
Filled With Banned Material**

For More Information On the Burn Barrel Project Contact:

Lynn Hall, Air Quality Specialist
Bad River Natural Resources
Department

(715) 682-7123

cleanair@badriver.com





The Gitiganing Garden Restoration Project





Background



Historically the Ojibwe people received a significant portion of their annual food supply from large raised-bed vegetable gardens, as well as hunting game and gathering wild roots, berries, and fruit.



Background



The name for the earliest settlement in Bad River is called “Gitiganing”, or “the place of the gardens”.



Gitiganing Grows!



• In just eight years, The Gitiganing Garden Restoration Project has grown from a small beautification project into over 80 residential gardens and 9 community gardens. It grows bigger every day!



Our Community Gardens



Community Field:

1.5 Acres full of community plots, market gardens, two large Three Sisters gardens, and two large sunflower spirals!



Our Community Gardens

Daycare Garden:

A youth garden shared with the daycare, full of cucumbers, tomatoes, veggies, and sunflowers.



Headstart Garden:

A youth garden for the summer feeding program and Headstart kids full of pumpkins, corn, and sunflowers.





Our Community Gardens

Powwow Garden:

A Three Sisters Garden (corn, beans, and squash), sunflowers, and tobacco for elders and saving seed



Medicinal Turtle Garden:

A traditional raised-bed medicinal garden in the shape of a turtle. For growing herbs and medicines.





Passing on the Legacy



- Traditionally, every decision or action was done with the awareness of how it would impact the next seven generations. Our project has this in mind.
- The most important thing is to lead our children to make healthy decisions. The Gitiganing Garden Restoration Project focuses on improving the diet, the education, and the overall lifestyle to enable the children to create a healthy lifestyle.

Seven Generations

- ▶ This presentation has described just a few of the ongoing projects of the Bad River Community. Many members of the community are working to make a difference for the future generations, both within the reservation and throughout the Chequamegon Bay Region.
- ▶ If you would like additional information please feel free to contact me.
- ▶ Tom Wojciechowski
twojo@badriver.com